

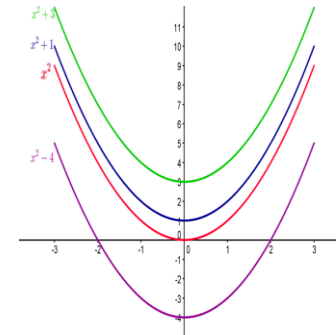
Review of Transformations

$$\text{Parent function } f(x) = x^2$$
$$g(x) = a(x + h)^2 + c$$

"c" is a vertical translation

upwards for $c > 0$

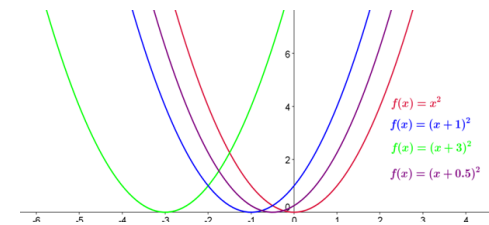
downwards for $c < 0$



"h" is a horizontal translation

to the left for $h > 0$

to the right for $h < 0$



"a" is a scaling with

$0 < a < 1$ making the graph wider

$a > 1$ making the graph narrower

$a < 0$ inverting the graph

$$f(x) = ax^2$$

